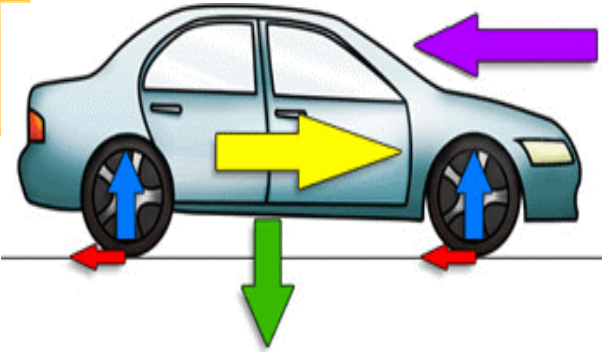
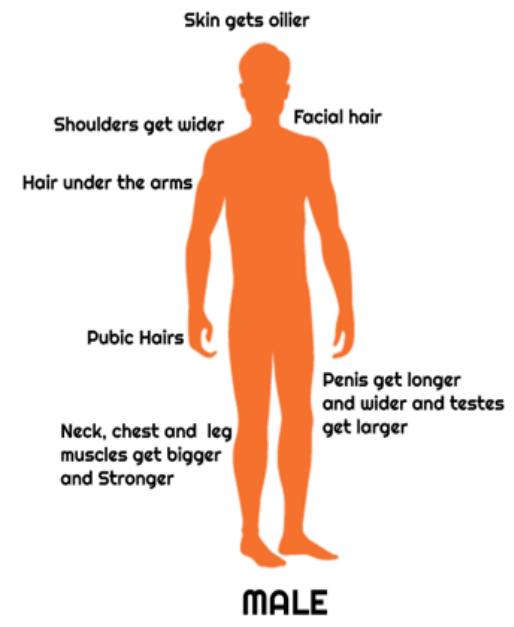


Year 7 knowledge organiser – Forces and Reproduction

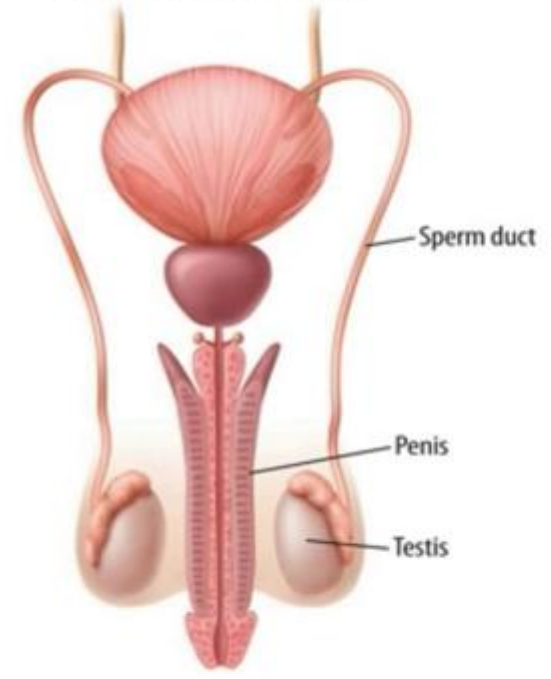
Contact Forces	Non-Contact (At-a-Distance) Forces
<ul style="list-style-type: none"> Applied Friction Air Resistance Tension Normal 	<ul style="list-style-type: none"> Gravitational Magnetic Electrical



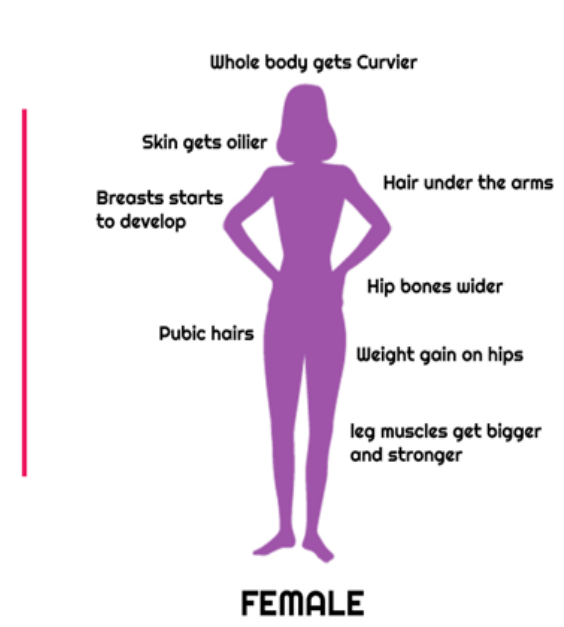
- █ weight
- █ driving force
- █ reaction force
- █ friction
- █ air resistance



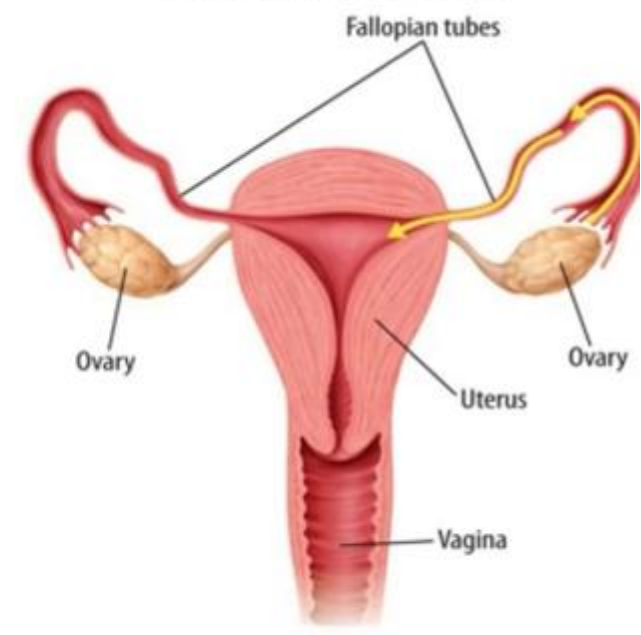
Male Reproductive System



The organs of the male reproductive system produce sperm and deliver it to the female reproductive system.



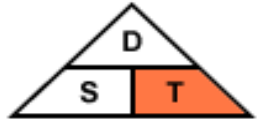
Female Reproductive System



The female reproductive system produces eggs and provides a place for a new human to grow and develop before birth.



Distance = Speed x Time



Time = $\frac{\text{Distance}}{\text{Speed}}$



Speed = $\frac{\text{Distance}}{\text{Time}}$

The **gestation period** is the time from fertilisation until birth. It lasts about 9 months (40 weeks) in humans. The gestation period is very long in some animals, which can make breeding them in zoos difficult. Once an embryo has developed a full set of **organs** it is called a **foetus** (pronounced 'fee-tus'). This takes about 8 weeks in humans.

Car safety features

